

Please note: this newsletter was issued by email in August 2016 to the NCRI mailing list. Hyperlinks were active at the time of distribution but are not maintained for historical reference – this PDF is intended as a record of news topics only. To receive future issues of the NCRI newsletter, please sign-up to our mailing list

[» Sign up to the NCRI Newsletter](#)

NCRI newsletter

Greetings!

Welcome to August's newsletter.

In this month's edition, we have a range of exciting updates from across the NCRI partnership; including an insight into the role of our new starter, Sam Gibbons Frendo, further information on future workshops available as well as the latest updates for our upcoming Cancer Conference.

We also have the usual key updates from our Partners; including the latest announcements and research from across the cancer research community.

Best wishes
The NCRI Team

NCRI Cancer Conference latest news

Register today to attend the UK's largest Cancer Conference

Our 12th annual Cancer Conference boasts a top-quality scientific programme; offering attendees the chance to learn about recent advances in oncological research, gain further insight into state-of-the-art technology, hear latest research findings and attend engaging networking sessions.

Register by **30 September 2016** to reserve your place.

[Register now](#)



Late breaking abstract submission now closed

Thank you to everyone who submitted their research. All submissions will be peer-reviewed by the [Scientific Committee](#) and we aim to inform everyone of the outcome **by the end of September**.

Updates across NCRI groups and initiatives

NCRI welcomes new Research Analyst



Sam Gibbons Frendo has recently joined the NCRI as our new Research Analyst. Sam is responsible for managing NCRI's Cancer Research Database (CaRD) - utilising the information to inform the work of the NCRI and our Partner organisations. He will also support the team with bespoke analysis and evaluation of data.

Before joining the NCRI, Sam worked for the Biotechnology and Biological Sciences Research Council. Here he was responsible for implementing the use of 'Researchfish' - an

Clinical Trials trainee scheme a huge success

32 junior clinicians completed the first round of our Clinical Trials trainee scheme this summer and we were delighted to hear feedback, in the form of a survey, reveal that overall it has been very successful. Key strengths of the scheme highlighted included the opportunity it offers to network with senior researchers and experience the mechanisms of a CSG. We will also be implementing suggested improvements, such as assigning a specific project for each participant to work on, for the next trainees joining us in autumn 2016.

[Read more feedback from the survey](#)

CM-Path invites industry to collaborate



The Technology and Molecular Diagnostics Workstream of the NCRI's CM-Path initiative is inviting industry partners to come together and identify ways in which we can collaborate to reach shared goals.

CM-Path and industry partners will be brainstorming on **5 October 2016** on topics like coordinating and facilitating the uptake of molecular diagnostics, integrated reporting, IT systems and digital pathology affecting us in the future.

[Find out more](#)

Call for proposals in Screening, Prevention and Early Diagnosis

The NCRI's Screening, Prevention and Early Diagnosis (SPED) group will be holding a workshop on **16 November 2016**. The aim of this workshop is to encourage investigators to develop new ideas for studies which can be turned into an application and can subsequently be submitted to a funding committee. We are inviting brief outline proposals from investigators in all SPED areas. The deadline for preliminary proposals is **30 September 2016**.

[Visit our website](#)

"Selecting Patients for Surgery" workshop

Register now to shape the future of cancer surgical trials at an event on 23 November 2016, hosted by the NCRI and the Royal College of Surgeons (RCS).

Surgical consultants, trainees, consumers (patients and carers), methodologists, trial unit staff and funders are welcome to attend this interactive workshop which aims to create recommendations for future surgical research priorities.

Registration deadline is **Friday 14 October**.

[Register now](#)



Collaboration in the cancer biobanking landscape

The NCRI's Confederation of Cancer Biobanks (CCB) and CM-Path members would like to invite donors, the biobanking community, regulators and researchers to join them on **17 October 2016** in Glasgow. Register now to join us and engage in discussions led by CM-Path, BBMRI-ERIC and the UKCRC Tissue Directory and Coordination Centre on new challenges and new technologies and Scotland's biobank accreditation scheme. **Registration deadline is Friday 30 September**.

[Find out more](#)

ICBP call for applications: International health systems and cancer patient pathway researchers

In September the International Cancer Benchmarking Partnership (ICBP) will open a call for applications to deliver research on 'cancer patient pathways' and 'the structure of health systems'. Our research agenda involves 8 cancer types across 22 jurisdictions in 8 countries. We are looking for international consortia / collaborations to deliver this research and would welcome applications from multidisciplinary teams.

[Find out more](#)

Partner and research news

CRUK launches Pioneer Award



CRUK's new award offers £200,000 grants to support innovative ideas with ground-breaking potential to tackle cancer. Ideas are welcomed all year round from any sector or discipline. It's easy to apply - just start with a two-page proposal of your idea's potential and a world-class panel will make the judgement anonymously.

Submit your brief proposal by **5 September 2016** and if successful, you could receive funding within 4 months.

[Find out more](#)

Optimising Pelvic Radiotherapy

The Royal College of Radiologists will be holding a dedicated oncology stream, entitled 'Optimising Pelvic Radiotherapy', at its Annual Scientific Meeting on **14 September 2016**. It will include discussions on planning and delivering state of the art radiotherapy for pelvic malignancies, issues of normal tissue tolerance, pelvic retreatment and managing the side effects of pelvic radiotherapy. There will also be special oncology "cases of the day" and CPD points available for the correct answer.

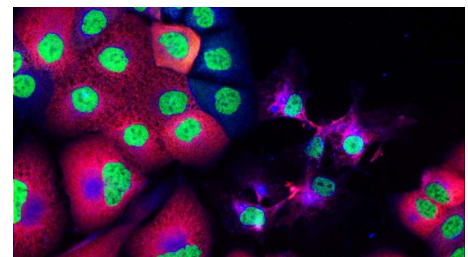
[Download programme](#)

Prostate Cancer UK Research Innovation Awards

Prostate Cancer UK is calling for bold, innovative, game-changing research with the potential to make a real impact. All proposals must clearly demonstrate the innovative nature of your research and how it will lead to improved health and wellbeing of men affected by, or at high risk of, prostate cancer.

Deadline for showing interest: **12pm 12 September 2016**.

[Find out more](#)



Involving the public in the design and conduct of research

The Public Health Agency and the Cancer Trials Network will be running a free workshop focusing on Building Research Partnerships on **28 September 2016** in Northern Ireland. The workshop will look at practical ways to involve patients and the public as partners (PPI) in the research process. It will explore the issues related to becoming and being a member of the public involved in research and the role of researchers in facilitating this involvement.

Reports, publications and resources

UKCRC launches new Tissue Directory

You can now register and search for human samples online using the UKCRC Tissue directory. Over 50 biobanks, spanning 70 diseases have already signed up to the directory which will be the most comprehensive tissue directory of its kind in the UK. Researchers can find suitable biobanks based on the associated datasets available, the age and gender of the donors as well as sample properties.

[Take a look](#)

CRUK annual Pioneering Research publication 2015/16

Pioneering Research celebrates some of the many achievements for CRUK and for researchers over the last year and the work CRUK is doing right now to implement its research strategy. The publication features stories highlighting examples of incredible work and outlines a few areas of current interest, from Nobel Prize-winning research to building team science.

[Read more](#)

Macmillan launches "Cancer: Then and Now" report

For the first time a report, "Cancer: Then and Now", highlights the extraordinary number of people alive many years after they were diagnosed with cancer. New analysis from Macmillan Cancer Support and Public Health England's National Cancer Registration and Analysis Service (NCRAS) estimates that at least 170,000 people are living with cancer who were diagnosed in the 1970s and 1980s. This new report focuses on diagnosis, treatment and aftercare from 1970-2016.

[Find out more](#)

Events and opportunities

[Future Horizons in Lung Cancer: discussing latest advances in the understanding and management of lung cancer. From 1-2 September at the Royal Society of Medicine, London](#)

[Childhood Cancer 2016: An international meeting showcasing state-of-the-art translational science in childhood cancer. From 5-7 September in London](#)

[The Future of Cancer Research and the Drugs Fund: analyse and discuss best practice and wider implications for future of cancer research in the UK. On 22 September in London](#)

[Second Molecular Analysis Conference for Personalised therapy \(MAP\). From 23-24 September in London](#)

[NCRI Upper GI Clinical Studies Group Trials Meeting. On 26 September in London](#)

[The 16th International Cancer Imaging Society Meeting & Annual Teaching. 3-5 October in Glasgow](#)

[The 9th Annual Royal Marsden Breast Cancer Meeting - Hot Topics in Breast Cancer. 7 October in London](#)

[...click here to see more opportunities like these on the NCRI website](#)

Follow us on  **twitter**

View our profile on  **LinkedIn**

National Cancer Research Institute (NCRI) www.ncri.org.uk