



# NCRI newsletter

## NCRI newsletter

Greetings!

Welcome to our latest newsletter.

This month we invite you to submit your feedback on the draft NCRI Strategy (2017-2022) and help us shape the direction of the NCRI Partnership. We look forward to seeing you in Liverpool at the 2016 NCRI Conference. Visit us at the NCRI Meeting Point, where you can see our strategy illustrated and offer feedback. You can also watch conference videos, read our latest publications and meet the team.

Don't forget to get in touch if there are other topics you would like us to cover in our monthly newsletter.

Best Wishes

The NCRI team

## NCRI Cancer Conference latest news

**The 2016 NCRI Cancer Conference is nearly here and we are looking forward to welcoming you to Liverpool.**

There are many exciting sessions to attend and we have more than 140 UK and international speakers, 500+ posters and over 70 exhibition stands.



This year marks a new partnership with BASO ~ The Association for Cancer Surgery which will be holding its annual Scientific Conference alongside the NCRI Cancer Conference on **Sunday 6 November, 09.30-15.00**. Registration opens from **09.00 on Sunday 6 November**. This collaboration is designed to help support and foster an increase in surgical research activity.

Don't miss the BASO ~ ACS robotic surgery session on **Monday 7 November, 14.00-16.00**. This symposium will highlight the application of robotics within different surgical specialties. Key note speakers, drawn from colorectal, thoracics, ENT, urology, and gynaecology, will provide an overview of robotics within their specialty, outlining benefits, limitations, and future developments. Participants will have the opportunity to practise on the new Xi da Vinci system in a simulated environment kindly provided by Intuitive Surgical.

[View all BASO ~ ACS sessions](#)

If you haven't yet booked your place and still want to attend then check out the [programme](#) and register onsite.

Follow the latest news on the Conference [@NCRI\\_partners](#) and [#NCRI2016](#).

## Updates across NCRI activities

### Your chance to comment on the NCRI's draft partnership strategy

The NCRI has just been through a strategic planning process to develop a new five year strategy for the Partnership. The draft strategy identifies a new purpose, goals and enabling factors.

It was produced in collaboration with NCRI Partners and other key stakeholders and now we are undergoing a consultation to understand the activities or areas we could develop to help us achieve these goals.

We are keen to hear your views on the strategy. Please send them to [strategy@ncri.org.uk](mailto:strategy@ncri.org.uk) by **5pm on 14 November** to have your say on how we can accelerate research related to cancer.

To access the draft strategy visit <http://www.ncri.org.uk/news-items/draft-ncri-partnership-strategy-2017-2022/>

---

## NCRI Clinical Studies Group (CSG) Consumer recruitment now open

NCRI is looking to recruit consumers (patients, carers and others affected by cancer) to join the following NCRI CSGs: Head and Neck, Skin Cancer, Lymphoma, Supportive and Palliative Care, Breast, Haematological Oncology and Gynaecological.

The NCRI CSGs have a remit to develop portfolios of clinical trials for specific cancer types or treatment approaches including overseeing the portfolio of existing studies, considering new research questions, developing proposals for trials and secure funding from NCRI Partners and others.

Consumer members participate in all aspects of the CSGs activities and are expected to provide written updates for each meeting. CSG consumers are appointed for 3 years in the first instance, with an option to extend membership for a further 2 years, once activity is reviewed. Consumers are also invited to join the [NCRI Consumer Forum](#), which brings together consumers involved in activities across the NCRI.

In order to register your interest in the upcoming recruitment of consumers to CSGs and for more information, please contact the NCRI consumer team: [consumers@ncri.org.uk](mailto:consumers@ncri.org.uk).

---

## Future of Surgery Workshop 4



**Workshop 4: "Extent of surgery and peri-surgical trials",  
17 January 2016**

We welcome surgical consultants, trainees, patients, methodologists, trial unit staff and funders to this workshop which aims to create recommendations for future surgical research priorities evaluating the extent of surgical treatment, particularly in the evolving context of neoadjuvant treatment.

**Registration deadline is Friday 2 December**

For Further information and to register visit: <http://www.ncri.org.uk/events/ncri-future-of-surgery-workshop-extent-of-surgery/>

## Partner and research news

### Current early diagnosis research conference call for abstracts

Cancer Research UK is hosting its next early diagnosis research conference on **23rd and 24th February 2017** in central London.

The conference will cover a broad range of early diagnosis themes including primary care, clinical decision support tools, emergency presentations and screening.

## CREST Award to be announced at NCRI Conference



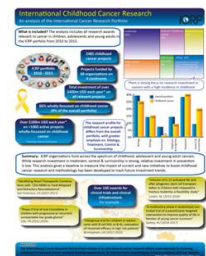
The Cancer Research Excellence in Surgical Trials (CREST) Award 2016 winner will be announced on **Sunday 6 November** at the NCRI Conference in Liverpool.

The CREST award aims to increase the engagement of surgeons in the National Cancer Research Institute (NCRI) and NIHR CRN: Cancer; increasing the number of surgical trials, and the percentage of patients with newly diagnosed tumours who are approached about entering cancer studies. The initiative also seeks to influence cancer research funders and surgical trainees.

For further info visit: <http://www.nihr.ac.uk/news/join-nihr-clinical-research-network-cancer-at-the-ncri-2016-conference/4524>

## Childhood cancer research - an analysis from the International Cancer Research Partnership

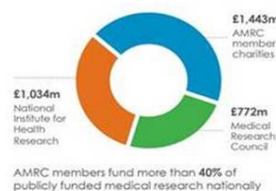
Analysis from the ICRP shows that members fund across the spectrum of childhood and adolescent cancers. This analysis provides a methodology to track future investment trends and a baseline to measure the impact of current and new initiatives to boost childhood cancer research.



For more information

visit: [https://www.icrpartnership.org/Publications/ICRP\\_ChildhoodCancer\\_2016.pdf](https://www.icrpartnership.org/Publications/ICRP_ChildhoodCancer_2016.pdf)

## Infographic demonstrates charity funding is paramount to UK research



This month the AMRC published a briefing and infographic showcasing the impact of UK medical research charity sector.

Using data provided by member charities, AMRC reveal that together medical research charities support over 40% of publicly funded medical research in the UK. **In 2015, this investment amounted to over £1.4bn, and AMRC member charities have consistently invested more than £1bn in research in each of the past eight years.**

The infographic illustrates medical research charities' impact; thanks to the 10 million people who donated to medical research in 2015:

- Charities funded more than 15,000 UK researchers
- 190,000 people across the country were recruited into charity-funded trials
- Charity funding stimulated more than £500m further investment from other charities, research councils, the Department of Health and global funders.

Click [here](#) to view the full infographic and click [here](#) to read the briefing.

# Royal College of Radiologists publishes 2015/16 Annual Review

Royal College of Radiologists (RCR) has recently launched its Annual Review which outlines achievements over the last financial year.

[https://www.rcr.ac.uk/sites/default/files/rcr\\_annual\\_review\\_2015-16.pdf](https://www.rcr.ac.uk/sites/default/files/rcr_annual_review_2015-16.pdf)

## ABPI publishes 'The changing UK drug discovery landscape'

The UK has historically played a leading role in the research and development (R&D) of new medicines. However, the increasing globalisation of the industry, combined with the widely recognised decrease in pharmaceutical R&D productivity, has led to a changing environment in how medicines are discovered and developed globally. The report published by the ABPI provides evidence of changes in the UK drug discovery landscape.

Download the report here: <http://www.abpi.org.uk/our-work/library/industry/Documents/the-changing-UK-drug-discovery-landscape.pdf>

## NIHR releases 2015/16 Activity League Table

The 2015/16 NIHR Research Activity League Table is now available and shows that ALL NHS trusts in England now deliver clinical research, providing thousands more patients with access to better treatments and care.

The NIHR Research Activity League Table can be accessed from the NIHR website:

<http://www.nihr.ac.uk/nihrleaguetable>

## Government publishes Accelerated Access Review

The Accelerated Access Review (AAR) final report sets out recommendations to speed up access to innovative healthcare and technologies and to improve efficiency and outcomes for NHS patients.

Download the report here: <https://www.gov.uk/government/publications/accelerated-access-review-final-report>

## Events and opportunities

[ICIS interactive Masterclass in Imaging of Pancreatic Tumours](#)

[On 3 November, London, UK](#)

[2016 NCRI Cancer Conference](#)

[From 6 - 9 November, Liverpool, UK](#)

[NCRI Workshop to help Investigators develop ideas for studies in Screening, Prevention or Early Diagnosis](#)

[On 16 November](#)

[UK Biobanking Showcase](#)

[On 16 November, London, UK](#)


[Advances in prostate cancer diagnosis and treatment](#)

[On 17 November, London, UK](#)

[NCRI Future of Surgery workshop - "Selecting Patients for Surgery"](#)

[On 23 November, London, UK](#)

STAY CONNECTED

Follow us on  twitter

View our profile on  LinkedIn

**Please note: this newsletter was issued by email in October 2016 to the NCRI mailing list. Hyperlinks were active at the time of distribution but are not maintained for historical reference - this PDF is intended as a record of news topics only. To receive future issues of the NCRI newsletter, please sign-up to our mailing list**

**[» Sign up to the NCRI Newsletter](#)**